

Microslave

**YOU'RE NOT GOING
ANYWHERE TODAY!**



FRONTPG.EXE - Ordinal Not Found

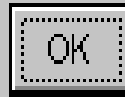


The ordinal 6880 could not be located in the dynamic link library MFC42.DLL.

OK



Cannot find \Herman\HERMAN C\nettoob95.exe. Windows needs this file to run \Herman\HERMAN C\nettoob95.exe.





Some errors occurred while processing the requested tasks.
Please review the list of errors below for more details.

<< Details

Stop


Always hide this dialog

You can hide this dialog, continue your work, and see this info in the Status Bar at the lower right.

Hide

Tasks

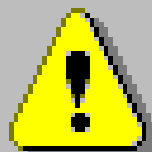
Errors

 An unknown error has occurred. Please save any existing work and restart the program. (Account: 'HW Email', SMTP Server: '192.168.1.2', Error Number: 0x80070057).





Microsoft Visual FoxPro



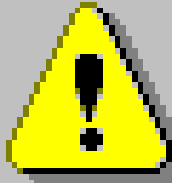
Uniqueness of index
c:\... \msdn98\98vsa\1033\samples\vfp98\tastrade\bitmaps\int
ell_s.bmp is violated.

OK

Revert

Help

Rules Wizard

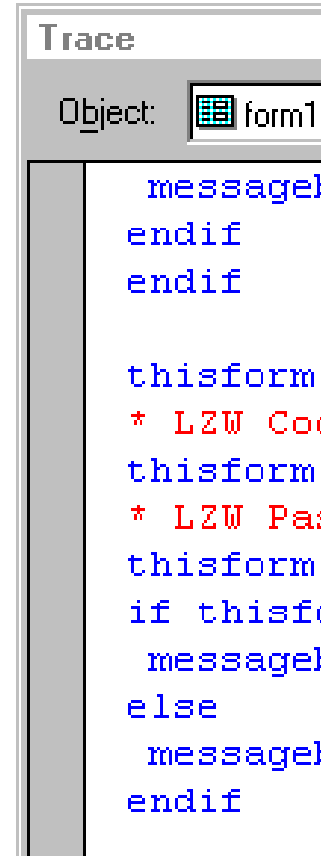
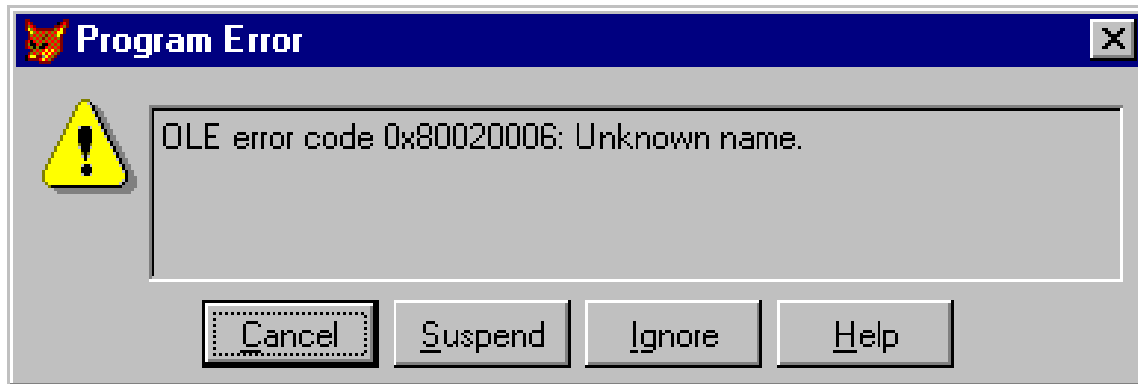


Rules created in this profile conflict with rules on the Microsoft Exchange Server. Only one set of rules can be saved. Which rules do you want to save?

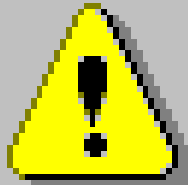
Client

Server

Cancel



RegSvr32



LoadLibrary("c:\winnt\system32\art32.ocx") failed.
GetLastError returns 0x0000007e.

OK

Extensis View Window Help

Undo Stupid Changes Ctrl+Shift+S

Read Boss' Mind Ctrl+Alt+R

Adjust Boss' Attitude Ctrl+Shift+A

Create Idea Ctrl+I

Insert Brilliance Ctrl+B

♥ Extend Deadline Ctrl+D

Enhance Salary Ctrl+Y

Find Better Client Ctrl+Alt+C

Restore Wasted Evenings Ctrl+W

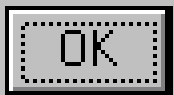
Save Weekend Ctrl+S

VFP6.EXE - Application Error

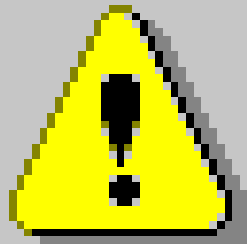


The instruction at "0x77f64765" referenced memory at "0x00000001". The memory could not be "written".

Click on OK to terminate the application



Microsoft Outlook

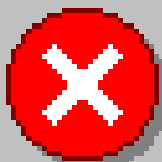


The operation failed.

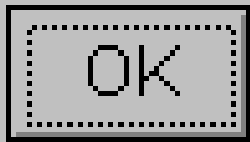
OK

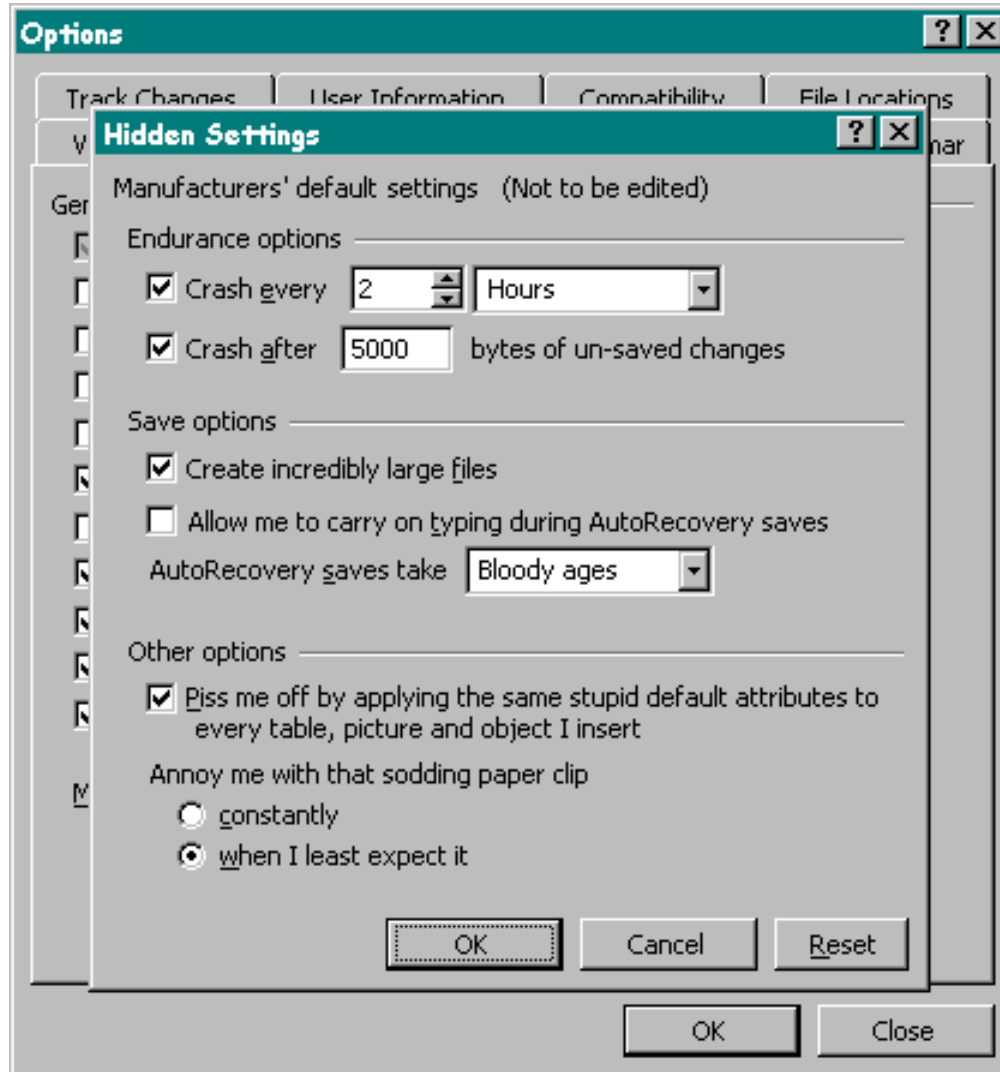


Microsoft Outlook



The operation failed.







vfpxtab












It will not be possible to send PRINT field data to the printer with the currently installed printer driver. Do you want to continue printing?

Yes

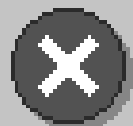
No

	CL CC 9900 Verific...	.doc	24,576	Microsoft Wor...	9/26/99	
	CL FL CC orderform...	.doc	31,744	Microsoft Wor...	9/7/99	1
	dir data verify.FRT	.frt	7,466	Microsoft Visu...	9/17/99	
	dir data verify.frx	.frx	25,368	Microsoft Visu...	9/17/99	
	MS BB 99				9/26/99	
	MS BB On				9/17/99	
	MS BB On				10/21/97	

Error 

 The operation completed successfully.

Help isn't available due to lack of memory or improper installation of Microsoft Windows or Microsoft Access.



For more information on troubleshooting a low memory problem, search the Microsoft Windows Help index for 'memory, troubleshooting'.

If you need to reinstall Microsoft Access, you may want to preserve your security or custom settings. To do so, back up the Microsoft Access workgroup information file. For more information on backing up files, search the Microsoft Windows Help index for 'backing up files'.

OK

Add/Remove Programs Properties



Install/Uninstall

Windows NT Setup



To install a new program from a floppy disk or CD-ROM drive, click Install.

Install...



The following software can be automatically removed by Windows. To remove a program or to modify its installed components, select it from the list and click Add/Remove.

- Adobe Acrobat Reader 3.01
- DIAMOND Display Component U
- HTML Help Workshop
- lomega Tools for Windows NT
- Microsoft Internet Explorer 4.0
- Microsoft Music Control
- Microsoft Office 2000 Premium
- Microsoft Outlook Express
- Microsoft Schedule+ 7.0

Setup



OK

Cancel

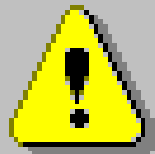
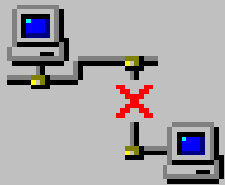
Add/Remove...

OK

Cancel

Apply

3Com NIC?????



??!

????????????????

????????????????????????????????

OK

??????



Microsoft

Ctrl

Alt

Delete

Departures

Montreal	AC865	Go to gate 28
Paris	ME202	Go to gate 5
London	AC857	Go to gate 23
Amsterdam	AA093	Go to gate 7
Chicago	AA067	Go to gate 18
Los Angeles	UA9392	Go to Lounge
New York	AI111	Go to Lounge
San Francisco	BI098	Gate open gate 9
Denver	AC897	Go to Lounge

Leave baggage unattended

12:07

colsonmaster

Windows

A fatal exception 0E has occurred at 0020:00000313 in UXD VWR101 00009313. The current application will be terminated.

- Press any key to terminate the current application.
- Press CTRL-ALT-DEL again to restart your computer. You will lose any unsaved information in all applications.

Press any key to continue

colsonmaster





Computer Hangs After 49.7 Days

The information in this article applies to:

- Microsoft Windows 95
- Microsoft Windows 95 OEM Service Release versions 2, 2.1, 2.5
- Microsoft Windows 98

SYMPTOMS

After 49.7 days of continuous operation, your Windows 95-based computer may stop responding (hang).

CAUSE

There is a problem with the timing algorithm in the Vtdapi.vxd file.

RESOLUTION

A supported fix that corrects this problem is now available from Microsoft, but it has not been fully regression tested and should be applied only to computers experiencing this specific problem. If you are not severely affected by this specific problem, Microsoft recommends that you wait for the next update that contains this fix.

To resolve this problem immediately, contact Microsoft Product Support Services to obtain the fix. For a complete list of Microsoft Product Support Services phone numbers and information on support costs, please go to the following address on the World Wide Web:

<http://support.microsoft.com/support/supportnet/default.asp>

Article ID: Q216641

Last Reviewed:
February 8, 1999

Provided by [Support Online](#) from Microsoft Product Support Services.

Did the information in this article help answer your question?

- Yes
- No
- Did not apply

Please provide additional comments on this article. (255 character max)

How many characters can I type into this box



Cannot remember the Content Advisor password due to cannot remember.

Cause:

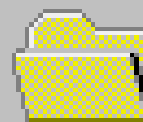
Cannot remember the password.

Solution:

Contact a Microsoft Product Support Professional for assistance.
NOTE: At the time this solution was written, call 1-800-936-5700 in the United States, and call call 1-800-668-7975 in Canada.

Provided by ServiceWare Inc. from Microsoft Product Support Services.

Copying...



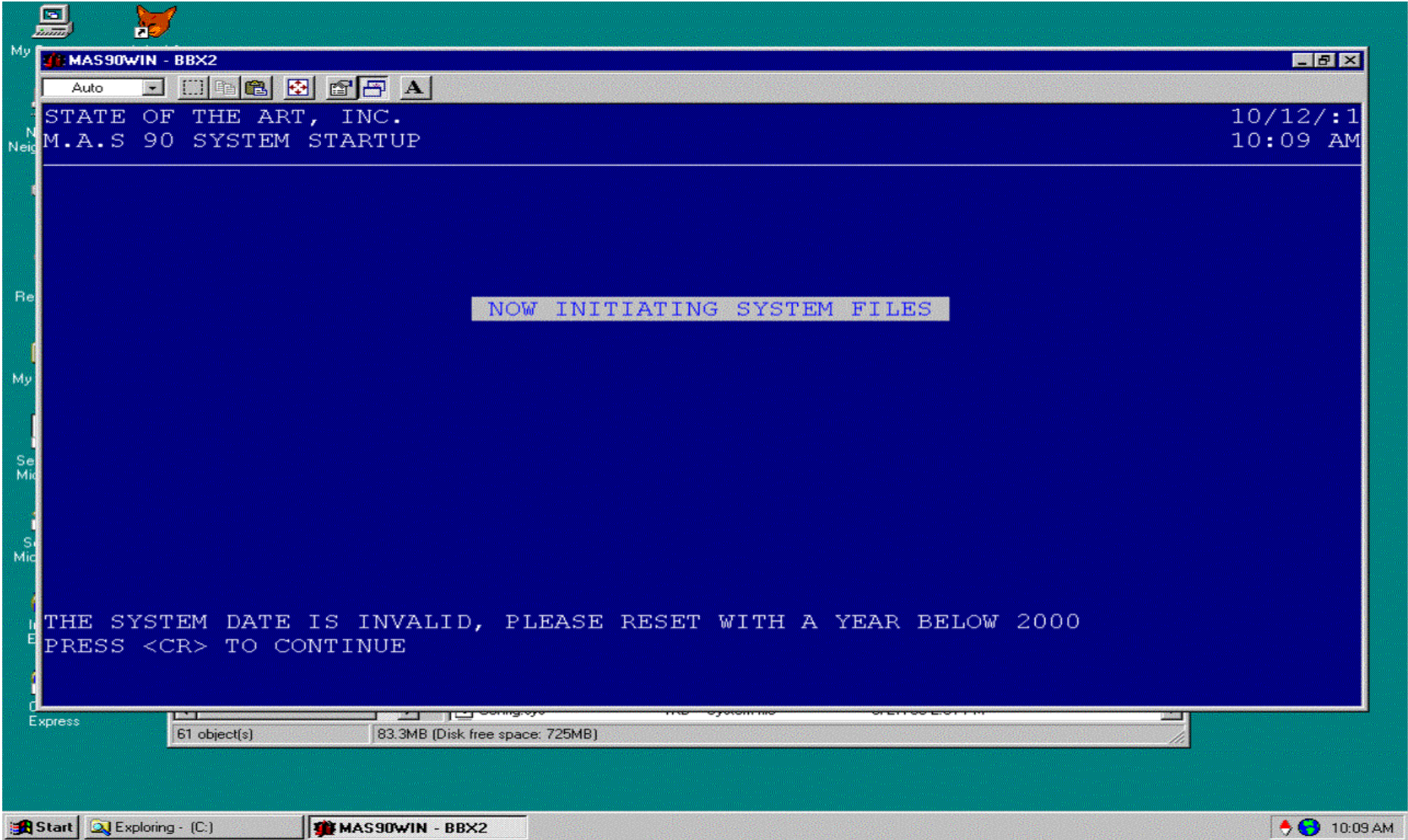
00222.zip

From 'devuti60' to 'devuti60'



Cancel

5113031 Minutes Remaining



MAS90WIN - BBX2

STATE OF THE ART, INC.
M.A.S 90 SYSTEM STARTUP

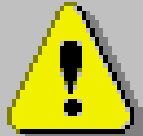
10/12/:1
10:09 AM

NOW INITIATING SYSTEM FILES

THE SYSTEM DATE IS INVALID, PLEASE RESET WITH A YEAR BELOW 2000
PRESS <CR> TO CONTINUE

61 object(s) 83.3MB (Disk free space: 725MB)

Program Error



realjbox.exe has generated errors and will be closed by Windows.
You will need to restart the program.

An error log is being created.

OK

